

OVERVIEW & SCRUTINY BOARD

BCP Community Safety Partnership



Mark Callaghan, BCP LPA Chief Superintendent and CSP Chair



**DORSET
POLICE**



PURPOSE OF THIS SESSION

- the role should be one of a critical friend, providing constructive challenge at a strategic level.
- the focus should be on the entire partnership and if issues arise that relate specifically to a particular partner agency, it may be more appropriate to refer such issues to the governing bodies of that organisation.
- the scrutiny of partners should be “in so far as their activities relate to the partnership itself.”

CSP STATUTORY RESPONSIBILITIES

- To establish a strategic group to direct the CSP's work
- To set up protocols and systems for sharing information
- To identify priorities via an annual strategic assessment
- To engage and consult the community about community safety priorities
- To produce (annually) a Partnership Plan and monitor progress against it
- To develop strategies to reduce re-offending and substance misuse
- To develop a tackling Domestic Abuse Strategy
- To commission Domestic Homicide Reviews



VISION AND MISSION

Vision:

To make Bournemouth, Christchurch, and Poole a safer and healthier place where communities and businesses thrive and where residents and visitors feel safe and welcomed.

Mission:

To provide clear strategic vision and leadership in improving safety in the conurbation for residents, businesses, and visitors.

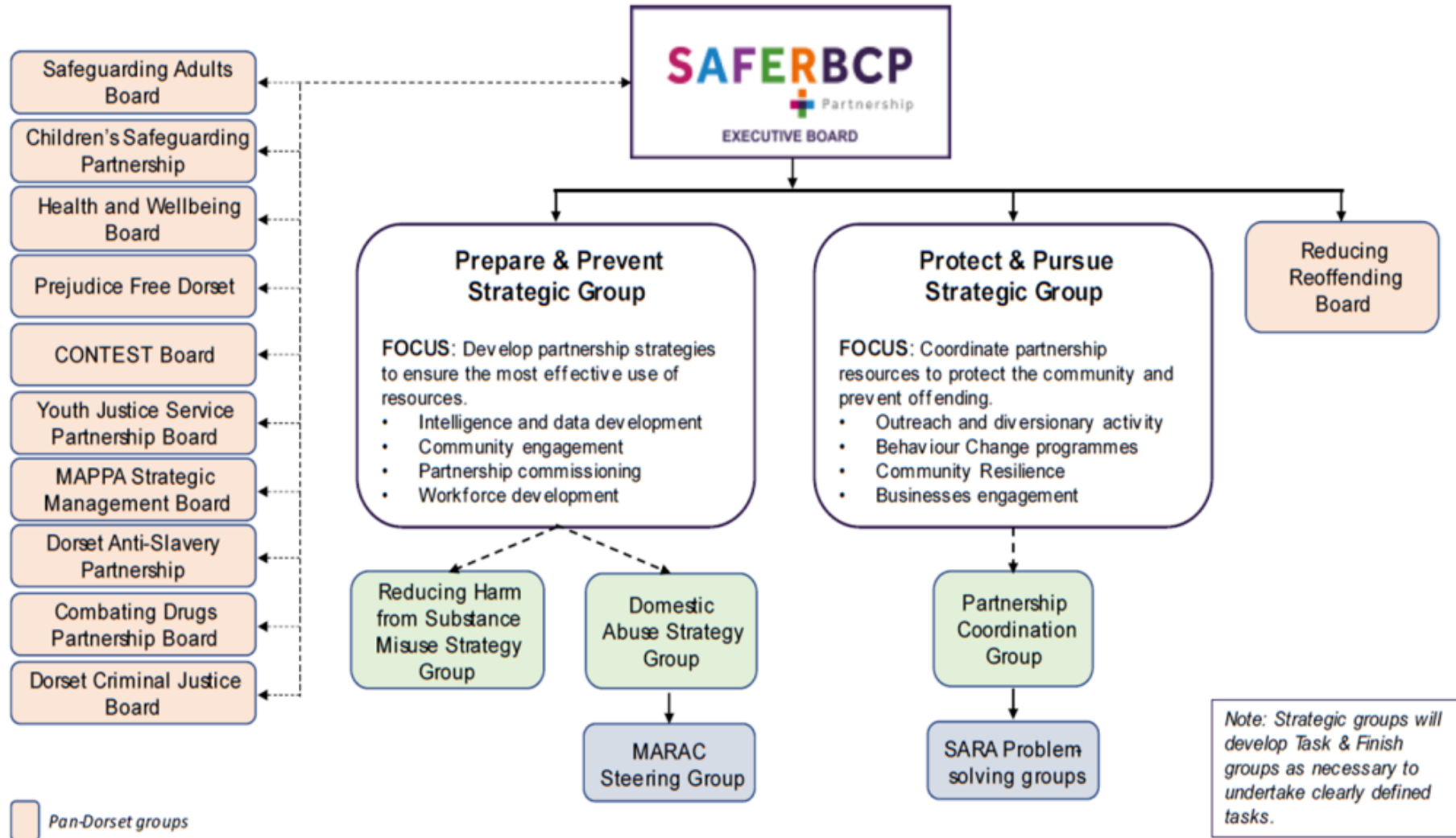
We will work to address crime and anti-social behaviour, using data, insight, and a combination of communication, engagement, prevention, early intervention, and enforcement, and will work closely with the community to provide support to victims, especially those who are vulnerable.

Tackle Violent Crime in all its forms

Keep young people and adults-at-risk safe from exploitation,
including online risks

Work with communities to deal with antisocial behaviour (ASB)
and crime hotspots, including ASB linked to substance misuse

PARTNERSHIP STRUCTURE



ACHIEVEMENTS - 2021/22

Strategic Assessment completed to inform the priorities of the CSP

Reductions in domestic abuse violent crimes and incidents

Established a Combatting Drugs Partnership

ASB Task & Finish groups- West Howe, East Cliff and Springbourne

Youth Service Summer Violence Prevention programme

Reductions in police recorded crime and downwards trends in violent crime

Reduction in the number of first-time entrants into the criminal justice system over the last four years for under 18s

Successful multi-agency Seasonal Response- 23.6% reduction in recorded ASB in and around lower gardens/pier approach

Community Safety Strategy adopted at Cabinet in September 2022

Implementation of new Domestic Abuse Strategy and Delivery Plan

UP2U domestic abuse family intervention programme estimates that £53k invested in to the programme saves over £933k in averted costs

Tackle Violent Crime in all its forms

Keep young people and adults-at-risk safe from exploitation, including online risks

Work with communities to deal with antisocial behaviour (ASB) and crime hotspots, including ASB linked to substance misuse

LOOKING AHEAD 2022/23

Completion of Annual Strategic Assessment to inform annual work programme

Ensuring that there is a joined up approach with other boards such as the Pan-Dorset Safeguarding Children Partnership

Focus on Youth Violence and understanding the key points for intervention and prevention

Review of approach to community engagement across the CSP

Enhanced capacity within analytical and community safety team for 'deep dives' into trends

Revived Prejudice Free Dorset Partnership

Serious Violence Duty; Protect Duty; Victims Bill

National review of CSPs and Prevent forthcoming

Tackle Violent Crime in all its forms

Keep young people and adults-at-risk safe from exploitation, including online risks

Work with communities to deal with antisocial behaviour (ASB) and crime hotspots, including ASB linked to substance misuse

Thank you for your time

Chief Superintendent Mark Callaghan –
mark.callaghan@dorset.pnn.police.uk

Partnershi